

- LEGEND**
- ORNAMENTAL FENCE
 - PRIVACY FENCE
 - COMMUNITY MAILBOX LOCATION
 - FIRE HYDRANT
 - CATCH BASIN
 - STREET LIGHT STANDARD
 - HYDRO UTILITY BOX
 - ACTIVE TRANSPORTATION PATHWAY
 - SIDEWALK
 - DRAINAGE EASEMENT
 - WO** LOT CONDITION - WALKOUT
 - HWO** LOT CONDITION - HALF WALKOUT
 - LO** LOT CONDITION - LOOKOUT

- ZONING LEGEND**
- PR** PUBLIC RESERVE
 - R1-S** RESIDENTIAL: SINGLE FAMILY - SMALL
 - R1-M** RESIDENTIAL: SINGLE FAMILY - MEDIUM
 - R2** RESIDENTIAL: TWO FAMILY
 - RMF-S** RESIDENTIAL: MULTI-FAMILY - SMALL
 - RMF-M** RESIDENTIAL: MULTI-FAMILY - MEDIUM
 - RMU** RESIDENTIAL: MIXED USE
 - C3** COMMERCIAL CORRIDOR

Revision	By	Appd	YYYY.MM.DD
3	ISSUED FOR REVIEW	WF	DB 2023.07.26
2	ISSUED FOR PARTIAL REVIEW	WF	DB 2022.09.26
1	ISSUED FOR PARTIAL REVIEW	DB	DB 2021.07.26
Issued			
File Name:	0860_WAYVERLEY_FEATURES_PLAN.R3	WF	DB DM 2022.09.26
		Dwn.	Dsgn. Chkd. YYYY.MM.DD

Permit/Seal

**PRELIMINARY
NOT FOR
CONSTRUCTION**

Not for permits, pricing or other official purposes. This document has not been completed or checked and is for general information or comment only.



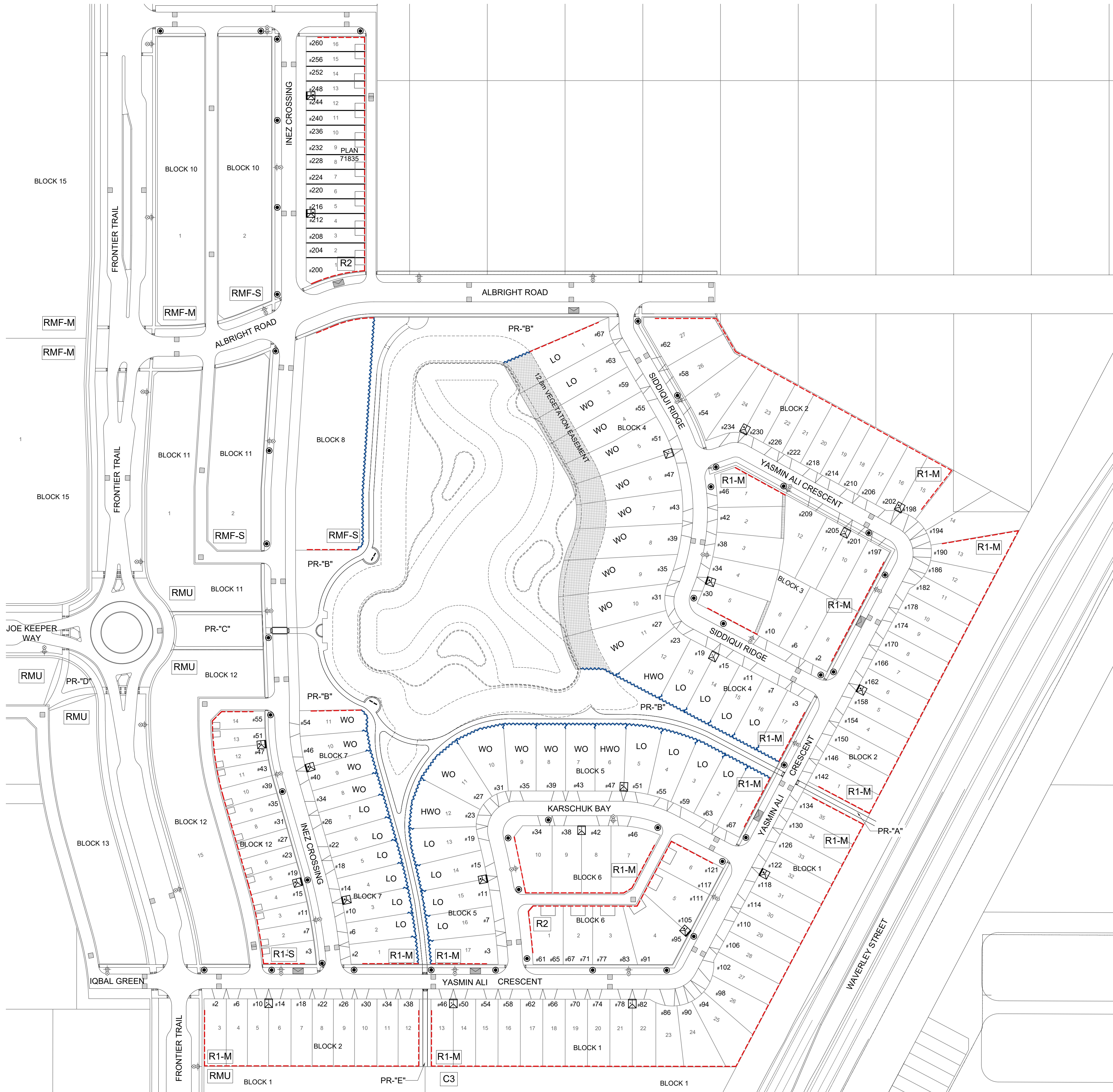
Client/Project
QUALICO COMMUNITIES

BISON RUN

WINNIPEG, MANITOBA

Title
**FEATURES PLAN
JULY 24, 2023**

Project No. 116809850	Scale 1:1000
Revision Sheet	Drawing No. 1:1000



V:\116809850\116809850_0000.dwg (2023.07.26) - 2023.07.26 14:33:31
 ORIGINAL SHEET - ARCH D